

Radioflex 300EG-B2-F

6032F3



Radioflex 250EG-B2-F

6029F4



Radioflex 200EG-B1-C

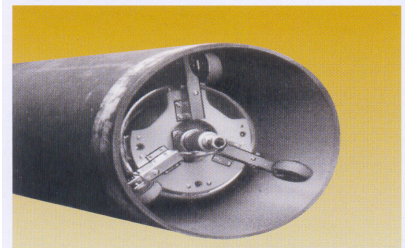
6026C2



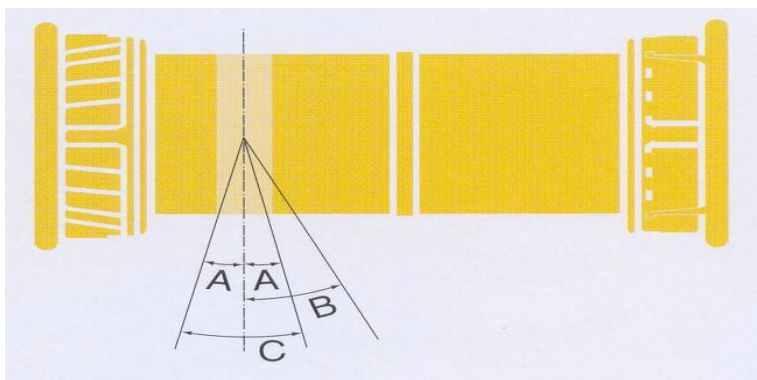
200EG-B1-C

The 360° series is so designed that the X-ray beam is emitted in a form of circumferential belt. It is used for inspection of welds by being primarily installed inside a large dia. steel pipe. Also, it can simultaneously take radiographs of a number of test pieces that are panoramically placed around the unit. This series can be used further for directional beam radiography with a unidirectional cover attached to the X-ray window.

Optional Parts



Casters for pipe interior travel



X-radiation Angle

	300EG-B2-F	250EG-B2-F	200EG-B1-C
A	-	-	12°
B	25°	25°	-
C	-	-	24°

(Model 200EG-B1-C alone is designed for 360° conical radiation.)

Specification

	300EG-B2-F	250EG-B2-F	200EG-B1-C
Output	200~300kV	160~250kV	120~200kV
	(5mA)	(5mA)	(5mA)
Power supply AC 190~240V	2.3kVA	1.8kVA	1.4kVA
Focus size	1.0X2.5mm	1.0X2.4mm	1.0X3.5mm
Dimensions { Generator Controller	785X356X356mm	698X320X320mm	630X262X262mm
	420X395X245mm	420X395X245mm	420X395X245mm
Weight { Generator Controller	50.5kg	35kg	22.5kg
	23kg	22kg	22kg

Reference Exposure Chart

