

IMPORT GUARD

Handheld XRF chosen by
US Customs, FDA, EPA, DOE, Consumer Agencies



Screen Imported Consumer Products for Lead (Pb) and Other Metals

The Import Guard Handheld XRF fast screening method allows you to test literally thousand of types of consumer products for lead (Pb) anywhere, anytime. That's why U.S. Customs & Border Protection (CBP), the EPA, CDC, USDA, and the Army, Navy, Air Force & Marines have all adopted Innov-X technology at their various sites around the world.



**Streamline the time from the
Stockroom to Satisfied Customers**

The Import Guard's patented sample recognition software assures automatic decision-making resulting in the simplest and most error free operation. There is no stopping to re-program the XRF system for each sample tested.

Benefits

- > Non-destructive testing –tests through packaging
- > High throughput –get pass/fail results within seconds
- > Plastic or metal –Import Guard automatically optimizes for best results
- > Screen for lead (Pb) and up to 25 other metals
- > Bring lab-grade analysis to your products
- > Versatile PDA platform and easy-to-read displays, or PC Operation with full reporting



Focus

- Children's Products
- Furniture & Fabrics
- Clothing & Footwear
- Jewelry & Accessories
- Food, Candy & Supplements
- Consumer Electronics, Toys,
Games & Books



Reduce Time & Costs of Regulatory Testing

Handheld XRF: A Simple, Fast, Low-Cost Solution for
Consumer Product Testing

Fast, on-the-spot screening for toxic metals in or on any material

- > Incoming Product QC
- > Inventory Checks
- > Component Testing
- > Spot Inspections
- > 3rd Party Testing Backup

Meets CPSC's "Reasonable Testing Program" Requirements

General Conformity Non-Destructive Testing. Rapid
Screening for Lead, Arsenic, Bromine, Mercury,
Cadmium, and other Toxic Metals

- | | |
|--------------|-----------------|
| > HR 4040 | > CPSIA 2008 |
| > FHSA | > OSHA ID-204 |
| > HUD PCS | > EPA 6200 |
| > NIOSH 7702 | > RoHS/WEEE/ELV |
| > Prop 65 | |



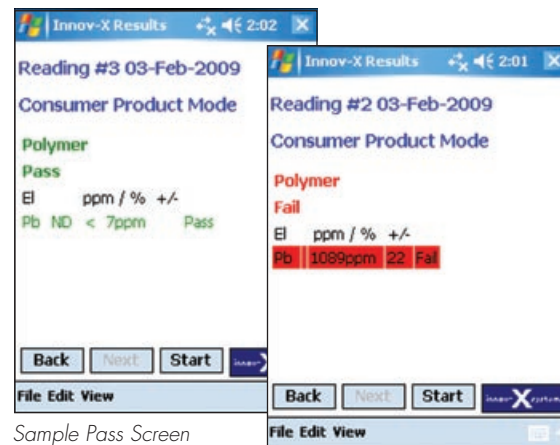
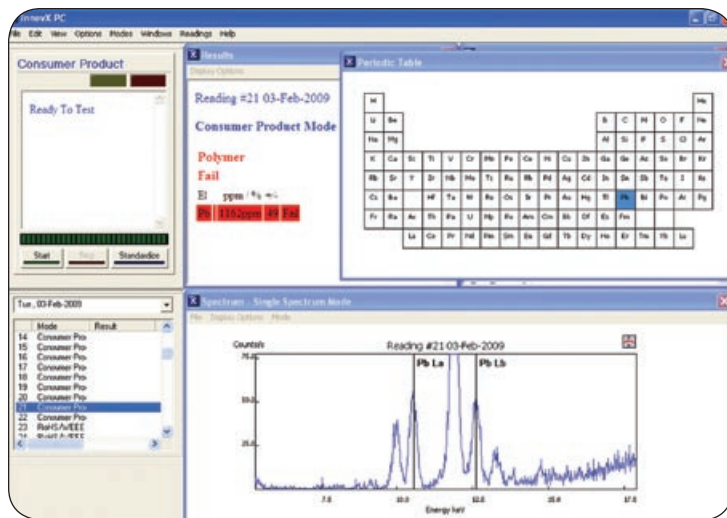
PRODUCT DATA

Screen Imported Consumer Products for Lead (Pb) and Other Metals



The Import Guard supports two languages simultaneously; typically English and then either Chinese, Japanese, Korean, Cyrillic or more than a dozen European languages. Full service distribution centers in China, Japan, Malaysia, Korea, Taiwan and India provide full training, service and support for your users overseas, so that your quality program there can be identical to your program here in the United States.

Typical Sensitivity	
Cd	30 ppm
Pb, Hg	10 ppm
Br	5 ppm
Cr	40 ppm
Sb	45 ppm



Sample Pass Screen

Sample Fail Screen

Basic Specifications

Weight:	2.625 lbs (base weight) 3.375 lbs with batteries
Excitation Source:	X-ray tube, W anode, 10-40kV, 10-50 μA, up to 6 wheel positions and filters
LEAP:	Delivers industry-leading detection limits on critical elements Cr, Cl, P
Detector:	Si PIN diode detector, <230 eV FWHM at 5.95 KeV Mn K-alpha line. Temperature Range: 10°C to +50°C
Operation:	Trigger or Start/Stop icon. One-touch trigger or "deadman" trigger option. Optional control from external PC
Power:	Li-ion batteries, rechargeable (charger included). Powers analyzer and iPAQ simultaneously. AC Adapter optional
Battery Life:	8 hours (typical duty cycle, 4 hours continuous (tube on) operation)
Number of Elements:	Standard package includes 20 elements
Standard Elements:	Pb, Cr, Hg, Br, Cd, Sb, Cl, P, Ti, Mn, Fe, Ni, Cu, Zn, Bi, Sn, Ag
Display Screen:	Color, high resolution touchscreen. Variable brightness provides easy viewing in all ambient lighting conditions
Data Display:	Concentrations in ppm, spectra and/or peak intensities (count rate) or user specified units, depending on software mode selected
Memory/Data Storage:	Minimum 20,000 test results with spectra, upgradable to >100,000 test results with upgrade to 1Gb flashcard. 128Mb standard memory
Processor:	Intel 400 MHz StrongArm processor
Operating System:	Microsoft Windows CE (portable system) or Windows (PC Based). Software Modes: Quantitative for accurate chemical analysis, FASTSORT for high speed sorting (2 sec tests) of PVC or Brominated Plastics

Specifications subject to change without notice.



The Import Guard tests for 20+ elements *simultaneously*

